



Lot 7, Bingara Gorge, Wilton
 Block Size: 381m² | North Hampton Facade

Package Price
\$944,900*

Midland 22 MKII

 4  2  2

House Price
\$449,900

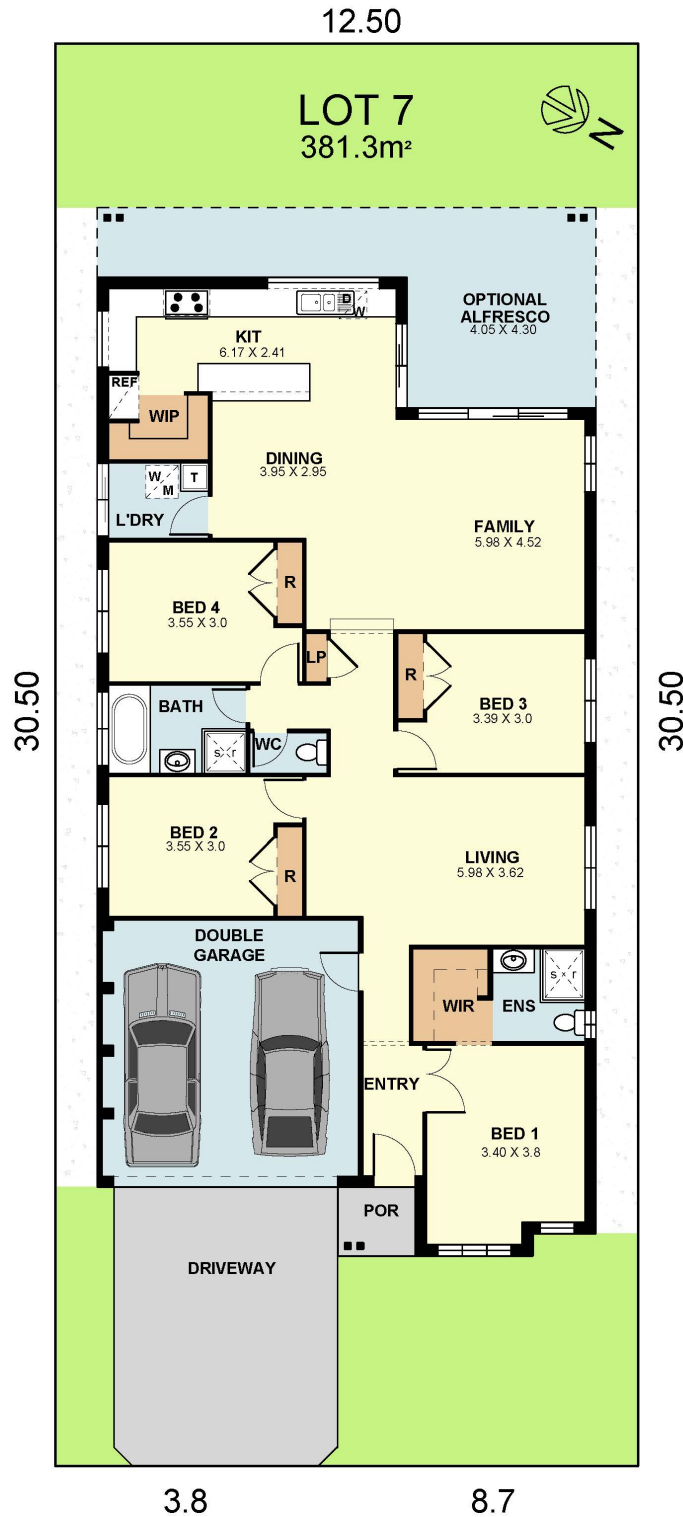
Land Price
\$495,000

Package includes:

- Advantage Series Luxury Standard Inclusions
- Stone benchtop to kitchen
- SMEG kitchen appliance package
- Ceramic floor tiles from Builders Range to entry, kitchen, meals & family room
- Quality wool blend sisal carpet from Builders Range to balance of home
- Alarm System
- Remote Controlled Garage Door
- Plain concrete to alfresco (where applicable)
- Installation and connection of sewer pods
- Driveway and path to entry
- Roof Sarking
- 2700mm high ceilings
- 26° roof pitch
- Landscaping incl. turf to front & rear
- Garden bed to front & rear boundary
- Fencing (Metal palisade fencing to front)
- Masonary Letterbox & clothesline
- 3m high ceilings to house area at rear with stepdown

Advantage
 series

Image may depict upgrade items and items not supplied by Eden Brae Homes such as decorative landscaping. Please speak to a sales consultant for a full list of inclusions.



TERMS & CONDITIONS: *NOTE: package prices are based on standard home, standard facade and builder's preferred siting. Depicted facade may incur an additional charge. Pricing may vary due to actual land availability. House and Land Packages are subject to developers design review panel, council final approval and Eden Brae Homes Procedure of Purchase. All prices are GST inclusive. Eden Brae Homes reserves the right to change prices without notice. Start date is subject to client, developer and council meeting time frames including but not limited to, land registration, amount of client variations, developer/council approval, acceptance of tender and contract within 7 days respectively. Prices are subject to developer, council and statutory requirements, location and condition of services. Package provided is based on Eden Brae Homes preliminary/preferred siting and preliminary developer land information currently available. Variations to land size, location of services - including but not limited to sewer/stormwater locations, drainage grates, Telstra pits, trees, butterfly drains, driveway crossover, pram ramps, electrical/other easements or Section 88B instrument, may necessitate floor plan or siting amendments. Eden Brae Homes Sale terms and conditions apply - full details of these are available from all Eden Brae Homes Display Centres. Please speak to your Eden Brae Homes consultant or refer to individual marketing material. Builders Licence Number 120300C. Effective August 2021