

FIXED PRICE
House & Land Package



Ellenbrook 24 | Astra Facade

4 2.5 2



**Lot 1912, The Gables,
Box Hill**

PACKAGE PRICE
\$1,149,900

HOUSE PRICE
\$560,400

LAND PRICE
\$589,500

EDEN BRAE PACKAGES

Featured Inclusions

- Advantage Series Opulence Inclusions
- Ducted air conditioning
- Stone benchtop to kitchen
- SMEG kitchen appliance package
- Selection of floor tiles or natural timber look laminate flooring to entry, kitchen, meals and family room
- Selection of quality textured loop pile carpet to balance of home
- Alarm System
- Remote Controlled Garage Door
- Tiling to front porch & alfresco
- Driveway and path to entry
- BASIX 7 inclusions
- Turf to front & rear
- Garden bed to front
- Fencing as per design guidelines
- Masonary letter box
- Clothes line

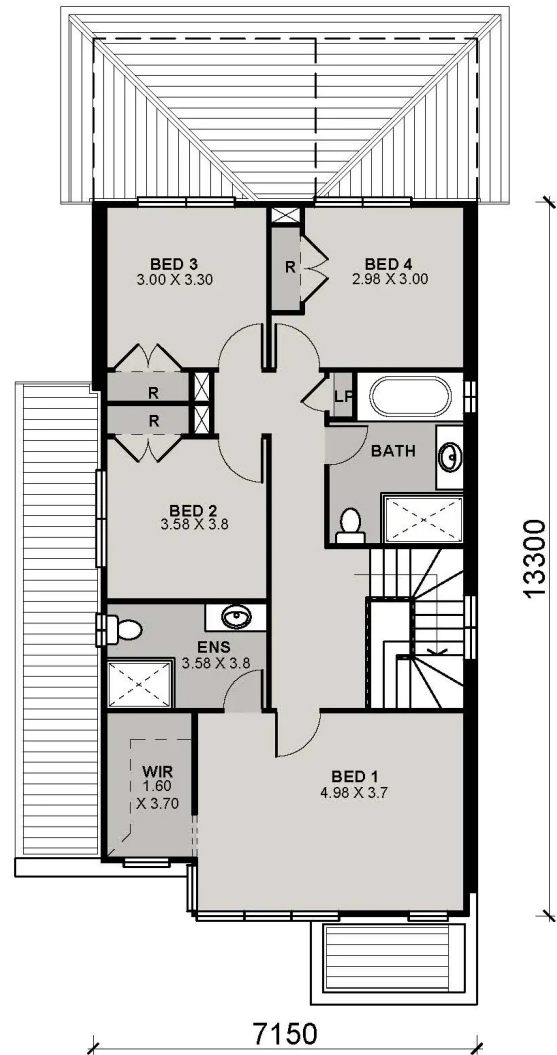
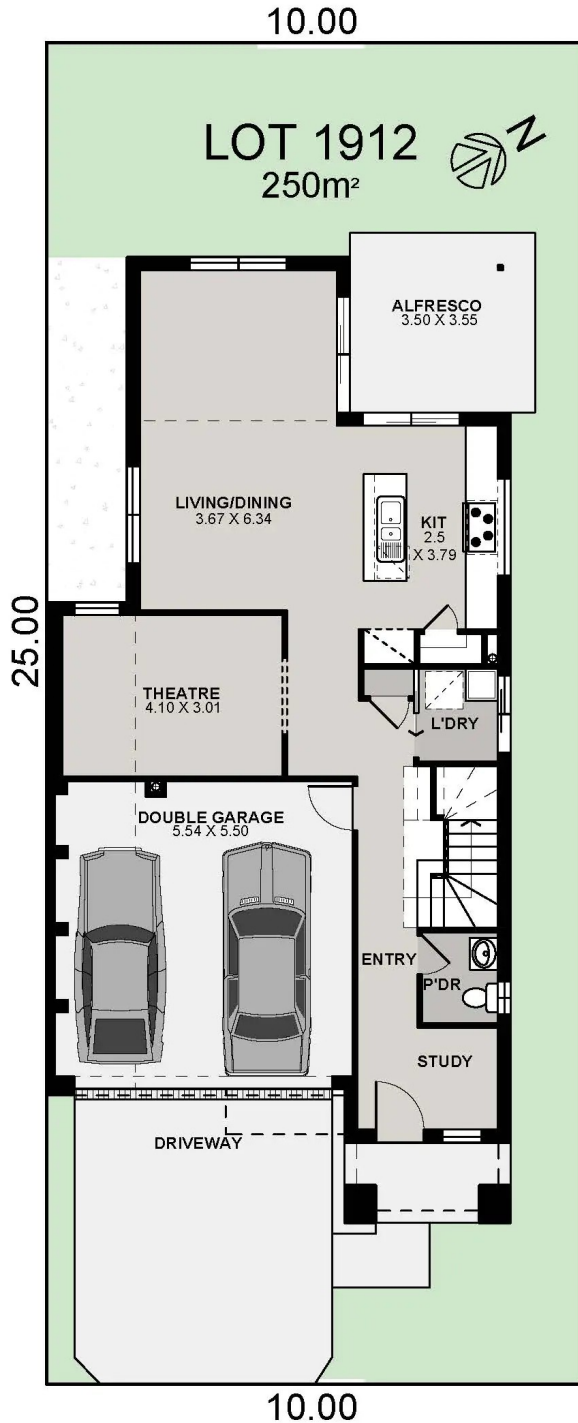
Call 1300 645 860

edenbraehomes.com.au

FIXED PRICE
House & Land Package

Ellenbrook 24 | Astra Facade

4 2.5 2



*Package prices are based on standard home, standard facade and builders preferred siting. Depicted facade may incur an additional charge. Pricing may vary due to actual land availability. House & Land Packages are subject to developer's design review panel, council final approval and Eden Brae Homes Procedure of Purchase. All prices are GST inclusive. Eden Brae Homes reserves the right to change prices without notice. Start date is subject to client, developer and council meeting time frames including but not limited to, land registration, amount of client variations, developer/council approval, acceptance of tender and contract within 7 days respectively. Prices are subject to developer, council and statutory requirements, location and condition of services. Package provided is based on Eden Brae Homes preliminary/preferred siting and preliminary developer land information currently available. Variations to land size, location of services - including but not limited to sewer/stormwater locations, drainage grates, Telstra pits, trees, butterfly drains, driveway crossover, pram ramps, electrical/other easements, or Section 88B instrument, may necessitate floor plan or siting amendments. Please speak to your Eden Brae Homes Sales Consultant or refer to individual marketing material. Builders License Number 120300C. Effective November 2024