

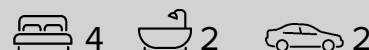
**FIXED PRICE**

House & Land Package



**eden brae**  
homes

**Madden 26** | East Harbour Facade



**Lot 557, Avery Rise,  
Heddon Greta**

**PACKAGE PRICE**  
**\$774,900**

**HOUSE PRICE**  
**\$393,900**

**LAND PRICE**  
**\$381,000**

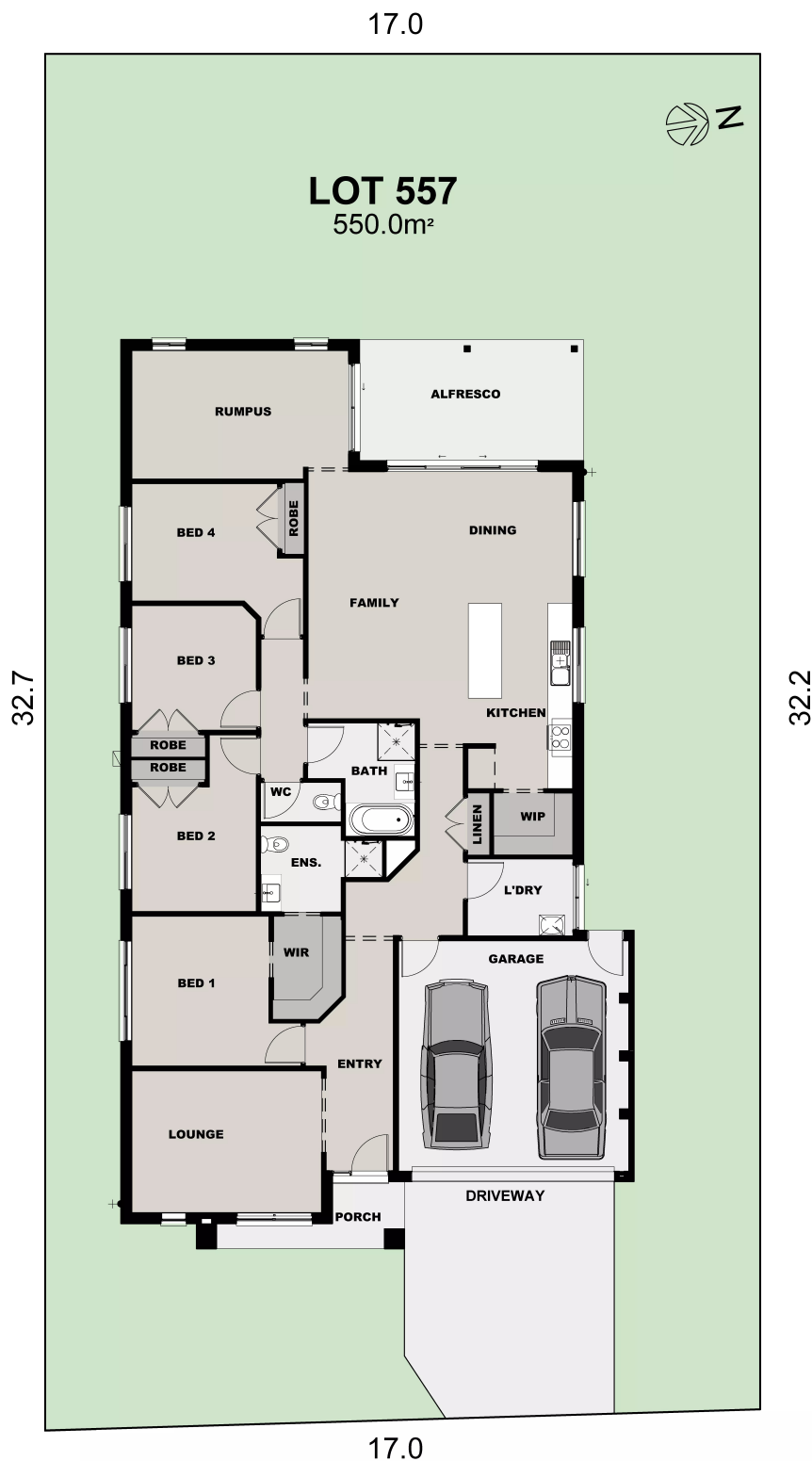
#### EDEN BRAE PACKAGES

#### Featured Inclusions

- EBXpress Series Inclusions
- Ducted air conditioning
- Stone benchtop to kitchen & bathroom
- Omega kitchen appliance package
- Driveway
- Standard range floor tiles to entry, kitchen, meals & family room
- Standard range quality wool blend sisal carpet to balance of home
- Alarm System & Remote Controlled Garage Door
- Plain concrete to alfresco (where applicable)
- Efficient Energy Saving Solar System
- Low - E Double Glazing to All Windows\*
- Low - E Double Glazing to Sliding Doors in Living Rooms
- R2.5 Glass Wool Wall Insulation
- Wall Wrap to Home
- Above Ground Rainwater Tank
- Ceiling Mounted Fans to Living Areas

**Call** 1300 645 860

[edenbraehomes.com.au](http://edenbraehomes.com.au)



\*Package prices are based on standard home, standard facade and builders preferred siting. Depicted facade may incur an additional charge. Pricing may vary due to actual land availability. House & Land Packages are subject to developer's design review panel, council final approval and Eden Brae Homes Procedure of Purchase. All prices are GST inclusive. Eden Brae Homes reserves the right to change prices without notice. Start date is subject to client, developer and council meeting time frames including but not limited to, land registration, amount of client variations, developer/council approval, acceptance of tender and contract within 7 days respectively. Prices are subject to developer, council and statutory requirements, location and condition of services. Package provided is based on Eden Brae Homes preliminary/preferred siting and preliminary developer land information currently available. Variations to land size, location of services - including but not limited to sewer/stormwater locations, drainage grates, Telstra pits, trees, butterfly drains, driveway crossover, pram ramps, electrical/other easements, or Section 88B instrument, may necessitate floor plan or siting amendments. Please speak to your Eden Brae Homes Sales Consultant or refer to individual marketing material. \*Excludes windows to wet areas and facade windows with decorative bars. Eden Brae Homes reserves the right to change or modify our featured BASIX 7 Star Package at any time. Builders License Number 120300C. Effective August 2024