

Savoy 27 Modified | Custom Facade

 4  2.5  2

ONLY
50k
DEPOSIT
BALANCE ON
COMPLETION



**Lot 124, Huntlee Estate,
North Rothbury**

PACKAGE PRICE
\$788,900

EDEN BRAE CONNECT PACKAGES

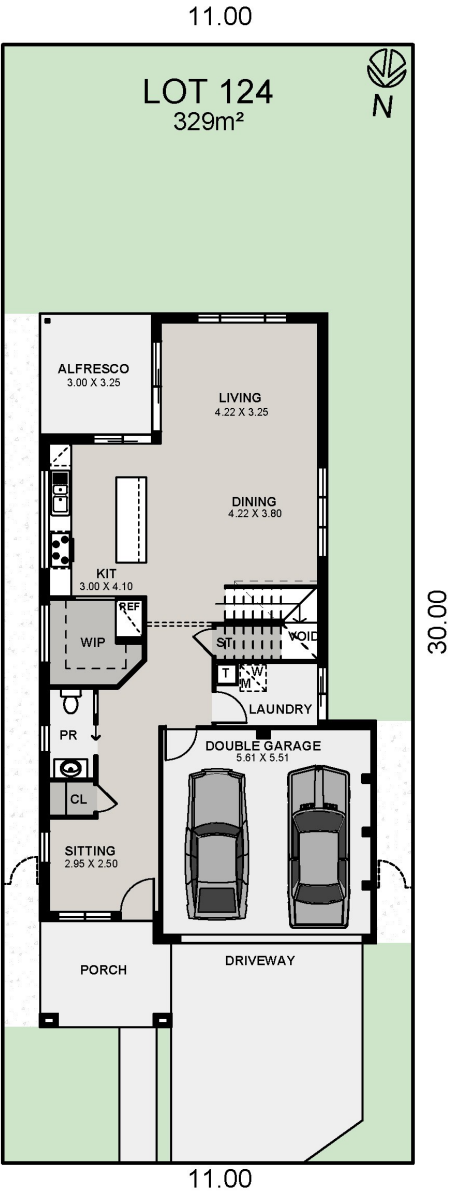
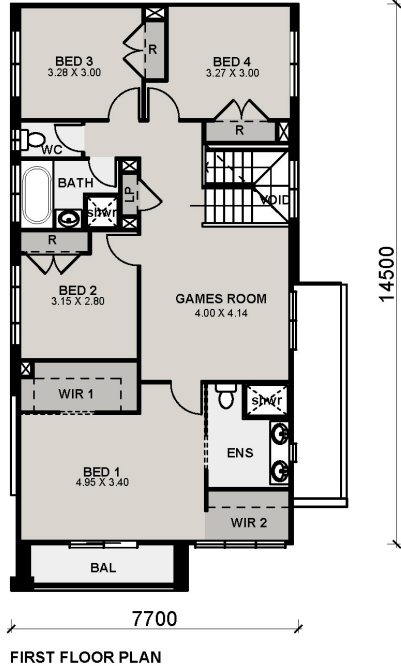
Featured Inclusions

- Connect Premium Inclusions Upgrade Promotion INCLUDED
- Reverse cycle ducted air conditioning
- 2590mm higher ceilings to ground floor only
- 2340mm high internal doors to ground floor only
- SMEG kitchen appliance package including microwave and dishwasher
- 20mm stone benchtops to kitchen, bathroom and ensuite
- Downlights to all main living areas
- Clipsal Iconic switch & dimmer smart technology to selected rooms
- Designer freestanding bath to main bathroom
- Ceramic tiles to living and wet areas and carpet to balance of home
- Tiled alfresco with ceiling fan ready to entertain
- Colour on concrete driveway and path
- Turf, garden bed and boundary fence
- Letter-box and clothes line
- Security alarm system
- Remote controlled garage door
- Low - E Double Glazing to All Windows*
- Low - E Double Glazing to Sliding Doors in Living Rooms
- R2.5 Glass Wool Wall Insulation



Savoy 27 Modified | Custom Facade

4 2.5 2



*Package prices are based on standard home, standard facade and builders preferred siting. Depicted facade may incur an additional charge. Pricing may vary due to actual land availability. House & Land Packages are subject to developer's design review panel, council final approval and Eden Brae Homes Procedure of Purchase. All prices are GST inclusive. Eden Brae Homes reserves the right to change prices without notice. Start date is subject to client, developer and council meeting time frames including but not limited to, land registration, amount of client variations, developer/council approval, acceptance of tender and contract within 7 days respectively. Prices are subject to developer, council and statutory requirements, location and condition of services. Package provided is based on Eden Brae Homes preliminary/preferred siting and preliminary developer land information currently available. Variations to land size, location of services - including but not limited to sewer/stormwater locations, drainage grates, Telstra pits, trees, butterfly drains, driveway crossover, pram ramps, electrical/other easements, or Section 88B instrument, may necessitate floor plan or siting amendments. Please speak to your Eden Brae Homes Sales Consultant or refer to individual marketing material. *Excludes windows to wet areas and facade windows with decorative bars. Eden Brae Homes reserves the right to change or modify our featured BASIX 7 Star Package at any time. Builders License Number 120300C. Effective January 2024