




Forsyth 30 (GS) | Fairview Facade

 5  3  2



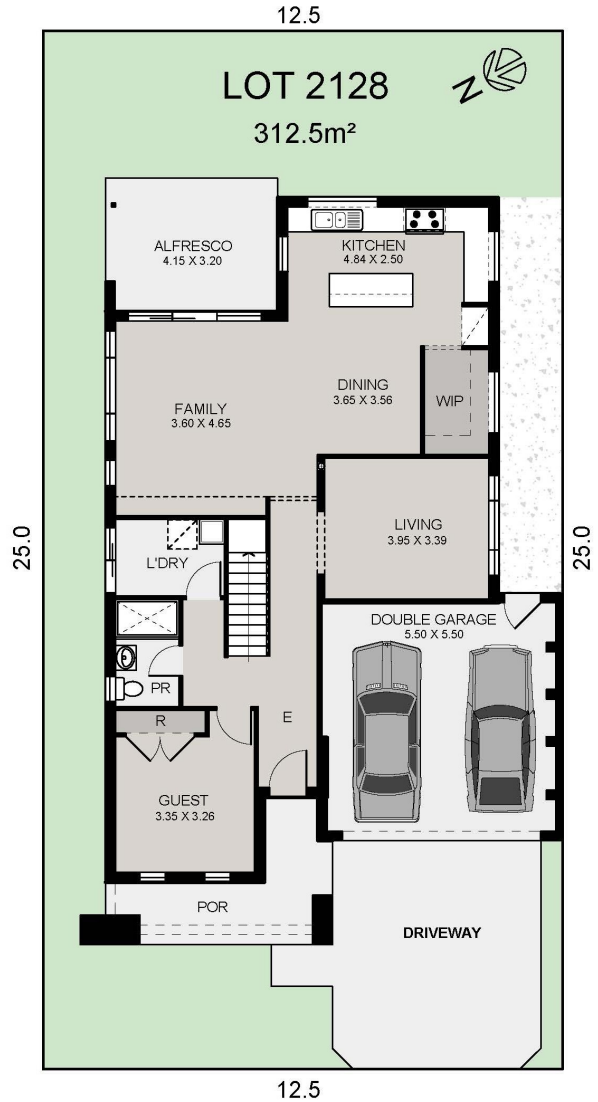
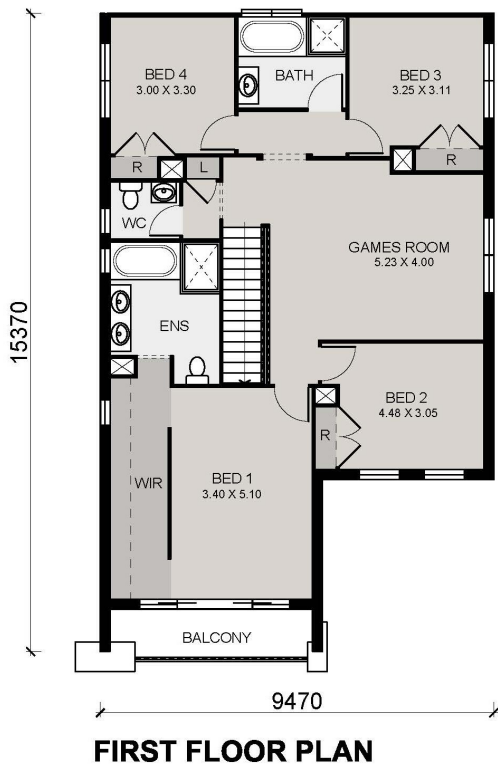
**Lot 2128, The Gables,
Box Hill**

PACKAGE PRICE
\$1,449,900

EDEN BRAE CONNECT PACKAGES
Featured Inclusions

**FORECAST COMPLETION AUGUST
2025**

- Connect Premium Inclusions Upgrade Promotion INCLUDED
- Reverse cycle ducted air conditioning
- 2590mm higher ceilings to ground floor only
- 2340mm high internal doors to ground floor only
- SMEG kitchen appliance package including microwave and dishwasher
- 20mm stone benchtops to kitchen, bathroom and ensuite
- Downlights to all main living areas
- Clipsal Iconic switch & dimmer smart technology to selected rooms
- Designer freestanding bath to main bathroom
- Ceramic tiles to living and wet areas and carpet to balance of home
- Tiled alfresco with ceiling fan ready to entertain
- Colour on concrete driveway and path
- Turf, garden bed and boundary fence
- Letter-box and clothes line
- Security alarm system
- Remote controlled garage door



*Package prices are based on standard home, standard facade and builders preferred siting. Depicted facade may incur an additional charge. Pricing may vary due to actual land availability. House & Land Packages are subject to developer's design review panel, council final approval and Eden Brae Homes Procedure of Purchase. All prices are GST inclusive. Eden Brae Homes reserves the right to change prices without notice. Start date is subject to client, developer and council meeting time frames including but not limited to, land registration, amount of client variations, developer/council approval, acceptance of tender and contract within 7 days respectively. Prices are subject to developer, council and statutory requirements, location and condition of services. Package provided is based on Eden Brae Homes preliminary/preferred siting and preliminary developer land information currently available. Variations to land size, location of services - including but not limited to sewer/stormwater locations, drainage grates, Telstra pits, trees, butterfly drains, driveway crossover, pram ramps, electrical/other easements, or Section 88B Instrument, may necessitate floor plan or siting amendments. Please speak to your Eden Brae Homes Sales Consultant or refer to individual marketing material. Builders License Number 120300C. Effective October 2024